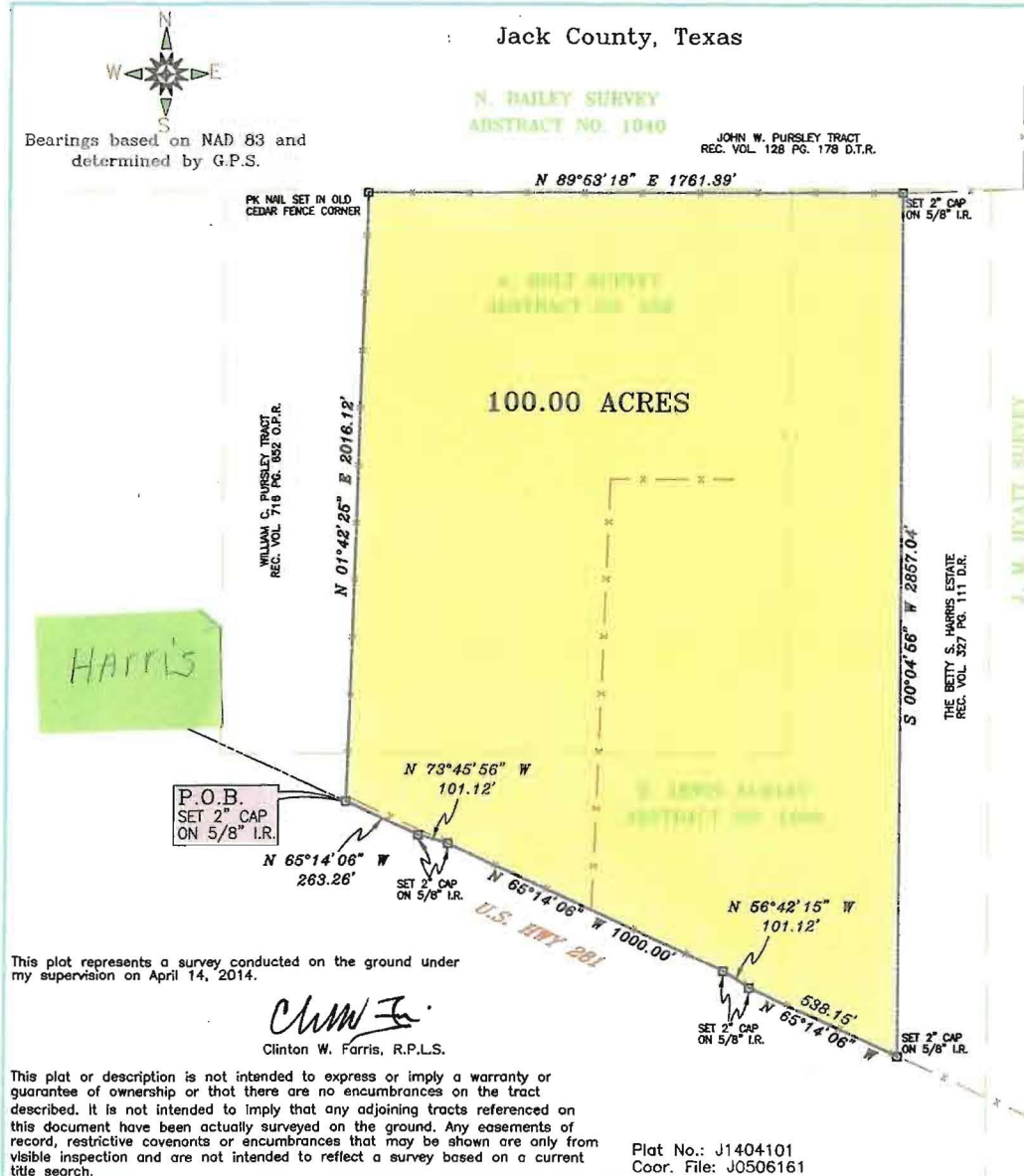


Jack County, Texas

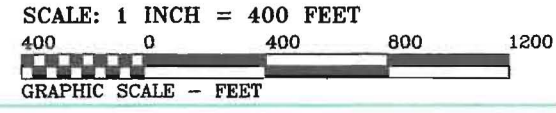
Surveyor's Description

Tract of land containing 100.00 acres in the A. Holt Survey, Abstract No. 956, and the D. Lewis Survey, Abstract No. 1699, Jack County, Texas, being part of the Betty S. Harris Estate, descriptions thereof recorded in Volume 327, Page 111, Deed Records of Jack County and being more particularly described as follows:

BEGINNING at a 2 inch cap on a 5/8 inch iron rod set on the north line of U.S. Highway No. 281, being the southwest corner of the said Harris Estate Tracts, and the southeast corner of the William C. Pursley Tract recorded in Volume 716, Page 652, Official Public Records of Jack County. THENCE North 01 degrees 42 minutes 25 seconds East for a distance of 2016.12 feet to a pk nail set in an old cedar fence corner post being a northwest corner of the said Harris Tracts, and the northeast corner of the said William C. Pursley Tract, and on the south line of the John W. Pursley Tract, recorded in Volume 128, Page 178, Deed of Trust Records of Jack County. THENCE North 89 degrees 53 minutes 18 seconds East for a distance of 1761.39 feet to a 2 inch cap on a 5/8 inch iron rod set being the northeast corner of the said 100.00 Acre Tract. THENCE South 00 degrees 04 minutes 56 seconds West for a distance of 2857.04 feet to a 2 inch cap on a 5/8 inch iron rod set being the southeast corner of the said 100.00 Acre Tract, on the south line of the said Harris Tracts and on the north line of U.S. Highway No. 281. THENCE North 65 degrees 14 minutes 06 seconds West for a distance of 538.15 feet to a 2 inch cap on a 5/8 inch iron rod set on the south line of the said Harris Tracts and on the north line of U.S. Highway No. 281. THENCE North 56 degrees 42 minutes 15 seconds West for a distance of 101.12 feet to a 2 inch cap on a 5/8 inch iron rod set on the south line of the said Harris Tracts and on the north line of U.S. Highway No. 281. THENCE North 65 degrees 14 minutes 06 seconds West for a distance of 1000.00 feet to a 2 inch cap on a 5/8 inch iron rod set on the south line of the said Harris Tracts and on the north line of U.S. Highway No. 281. THENCE North 73 degrees 45 minutes 56 seconds West for a distance of 101.12 feet to a 2 inch cap on a 5/8 inch iron rod set on the south line of the said Harris Tracts and on the north line of U.S. Highway No. 281. THENCE North 65 degrees 14 minutes 06 seconds West for a distance of 263.26 feet to the place of beginning.



Clinton W. Farris
REGISTERED PROFESSIONAL LAND SURVEYOR
SURVEYING & MAPPING SERVICES
P.O. BOX 235, JACKSONVILLE, TEXAS 76455 940/387-3362
"Upon Sight Not Remove City Neighbor's Signage" Sect. 18.14



This plot represents a survey conducted on the ground under my supervision on April 14, 2014.

Clinton W. Farris
Clinton W. Farris, R.P.L.S.

This plot or description is not intended to express or imply a warranty or guarantee of ownership or that there are no encumbrances on the tract described. It is not intended to imply that any adjoining tracts referenced on this document have been actually surveyed on the ground. Any easements of record, restrictive covenants or encumbrances that may be shown are only from visible inspection and are not intended to reflect a survey based on a current title search.

Plot No.: J1404101
Coor. File: J0506161